



FREDERIC KELLOGG

**September 12 -
October 20, 2007**

CALDBECK GALLERY

12 Elm St Rockland Maine 04841

207.594.5935 www.caldbeck.com

caldbeck@midcoast.com

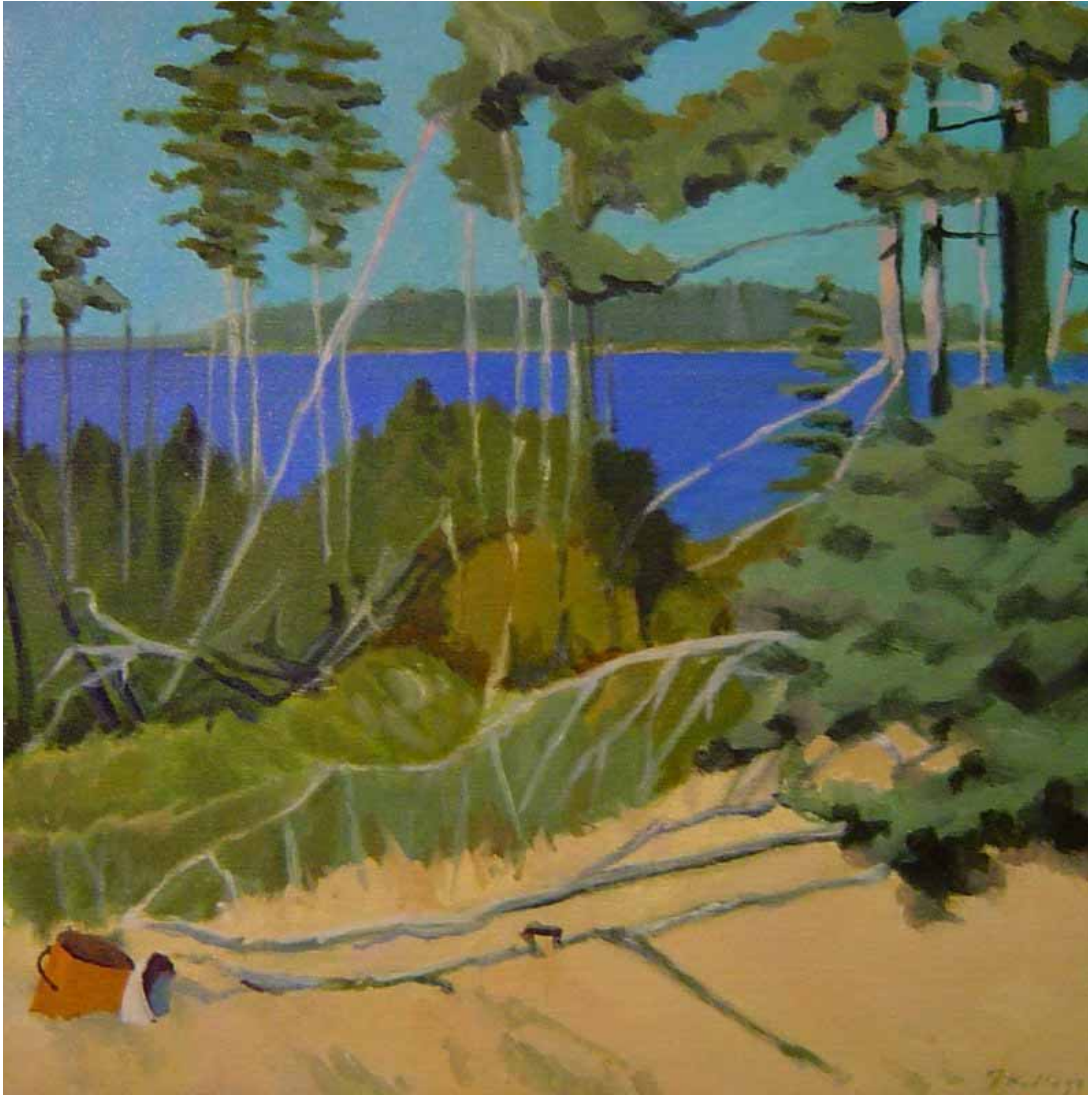
FREDERIC KELLOGG

Kellogg's work in this show is about Maine and his attachment to place. Islands play a big part; some are seen from a distance from the water, some from vantage points on the islands themselves, looking out, and some are seen as a shoreline where a boat is about to land. His love for the work of American Realists like Edward Hopper, Fairfield Porter, and Lois Dodd is evident: sometimes his paintings seem to tell a story the viewer cannot quite figure out, and sometimes there is only the abstract arrangement of shapes which can be read as a recognizable picture. In Maine, he has exhibited at Gallery 68 formerly of Belfast, O'Farrell Gallery formerly of Brunswick, and Nan Mulford Gallery of Rockland. He is represented in the permanent collections of the Farnsworth Museum of Art, the Portland Museum of Art, and is included in numerous corporate and private collections throughout the country.

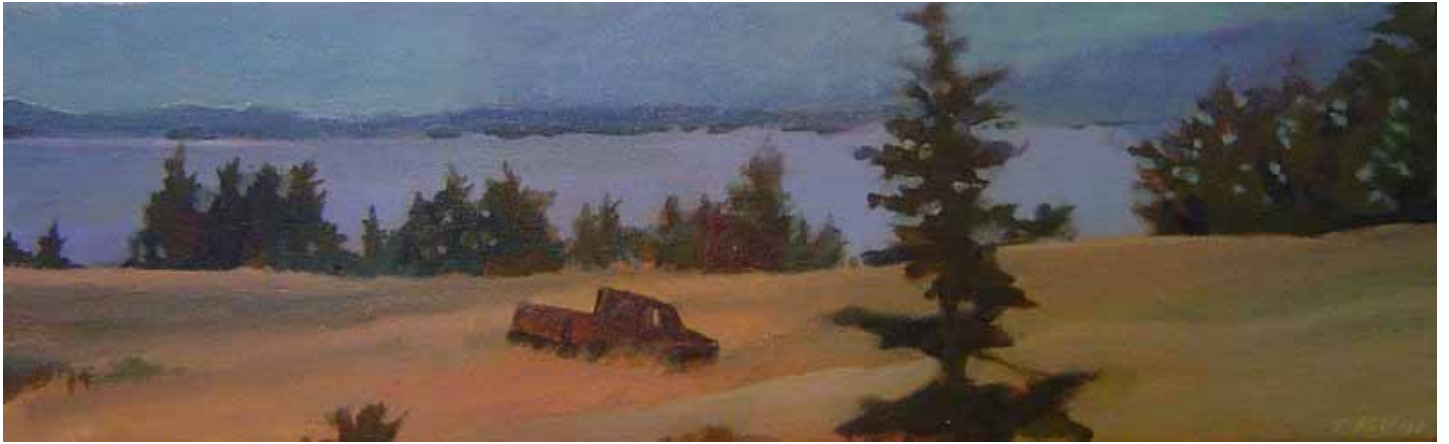
Front Cover: BIRCH oil on canvas 36 x 24 inches



EASTERLY BREEZE oil on canvas 48 x 48 inches



EAGLE ISLAND oil on canvas 14 x 14 inches



RAINY ISLAND WITH OLD TRUCK oil on canvas 7 x 22 inches



OSPREY NEST oil on linen 22 x 24 inches



ISLAND oil on canvas 4 x 8 feet



OLD TREE ON MAGEE ISLAND oil on canvas 24 x 24 inches



WOODS oil on canvas 7 x 16 inches



ROUTE 131 oil on panel 8 1/2 x 19 inches



WILDFLOWERS BY TRACK oil on canvas 8 x 16 inches



BRIDGE ON ROCK CREEK oil on panel 11 x 11 inches



MELTING SNOW oil on panel 11 x 11 inches



ISLAND DUMP WITH RUSTY TRUCK oil in canvas 14 x 14 inches



CALDBECK GALLERY

12 Elm St Rockland Maine 04841
207.594.5935 www.caldbeck.com
caldbeck@midcoast.com

WINDOW BY LAKE oil on canvas 16 x 22 inches